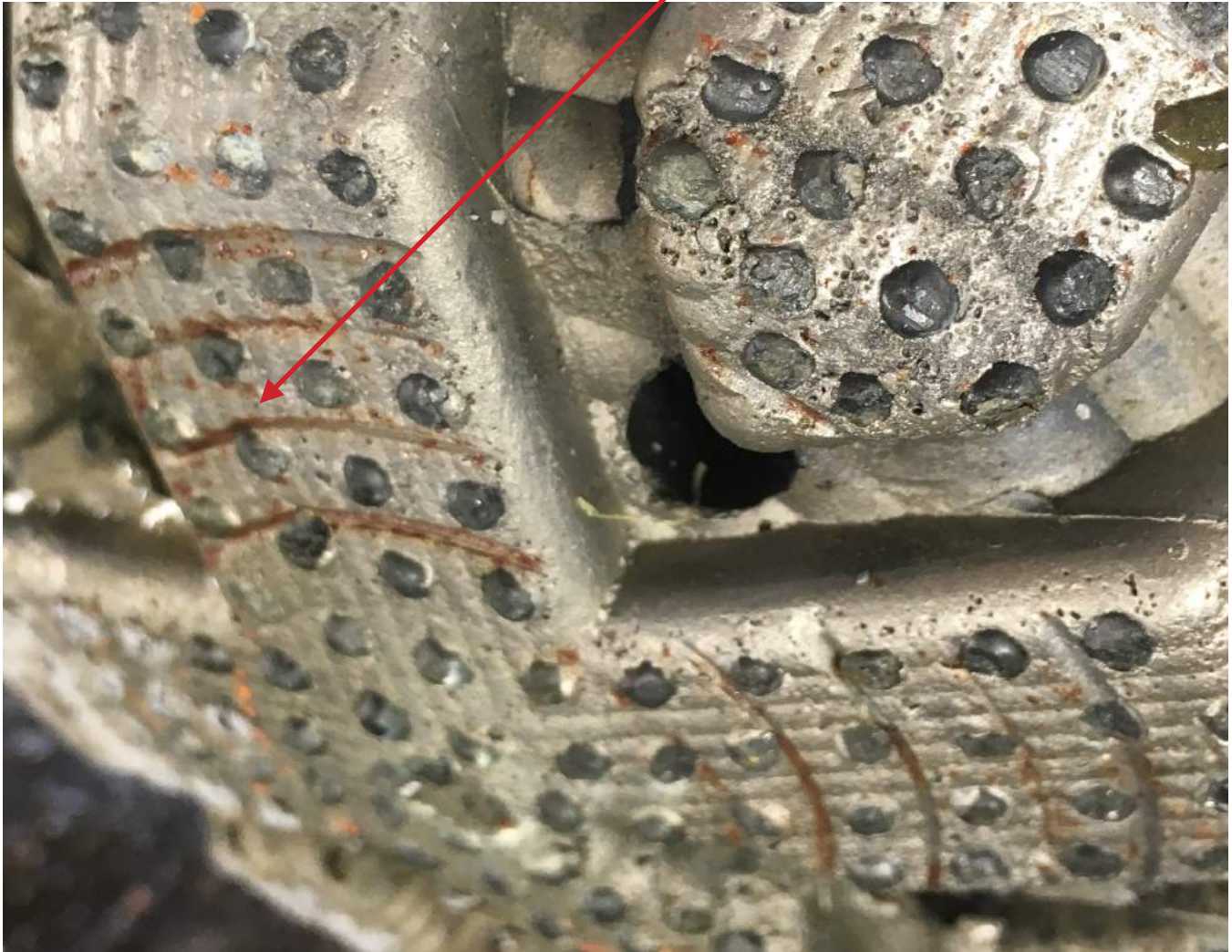


Notice the groove moves around some diamonds that is because it is a shard of steel that has not been cut off yet so it can flex between diamonds.



In this case we don't have a hydraulic cushion or the chip hold down that bits have, so the small grooves cut into the target (in steel) tend to form a chip that is not broken off easily so it will wear between diamond coverage. Notice the groove stops when coverage (number of blades) doubles.