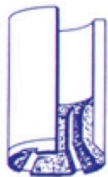
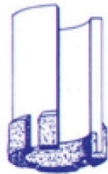


Carbide Shoes



Type A

This shoe is used to size and dress the top of a fish inside the casing. It makes a tapered cut on the fish with out damaging the case and cuts on the I.D., O.D. and bottom.



Type B

Is used in open hole for washing over and cutting formation, metals or cement with limited inside clearance. It cuts on the I.D., O.D., and bottom.



Type C

Is used to cut metal on the fish with no damage to the casing. It cuts on the I.D., and the bottom.



Type D

Is used for washing over and cutting formation only. It cuts on O.D. and bottom only.



Type E

Is used for washing over and cutting formation only. It cuts on the bottom, but not on the I.D., and O.D.



Type F

Is used inside casing for washing over and cutting on the bottom only. It does not cut on the I.D. or the O.D.



Type G

Is a low torque type shoe used for cutting metal, formation, or cement in the open hole. It cuts freely on the I.D., O.D., and bottom.



Type H

Is a drag type shoe used to cut soft formation, or when running weak string. It cuts on the bottom only.



Type I

Is a low torque type of shoe used inside casing to wash over and cut on the bottom only avoid damages to the casing or fish.



Type J

Is used to cut metal on the fish without damaging the casing. It cuts on the bottom and on the I.D. only.

Carbide Chip Shoes can be made to any one of several industry standard face shapes to suit client specs.

