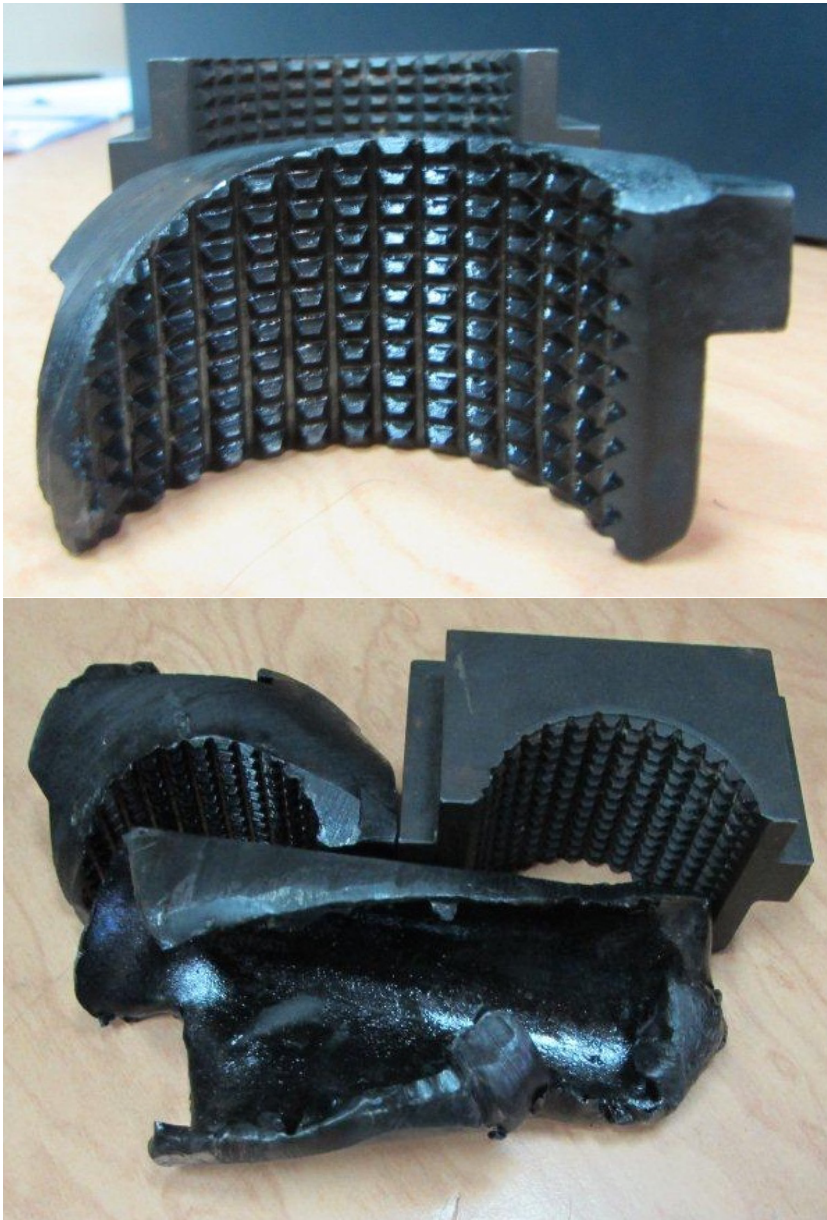


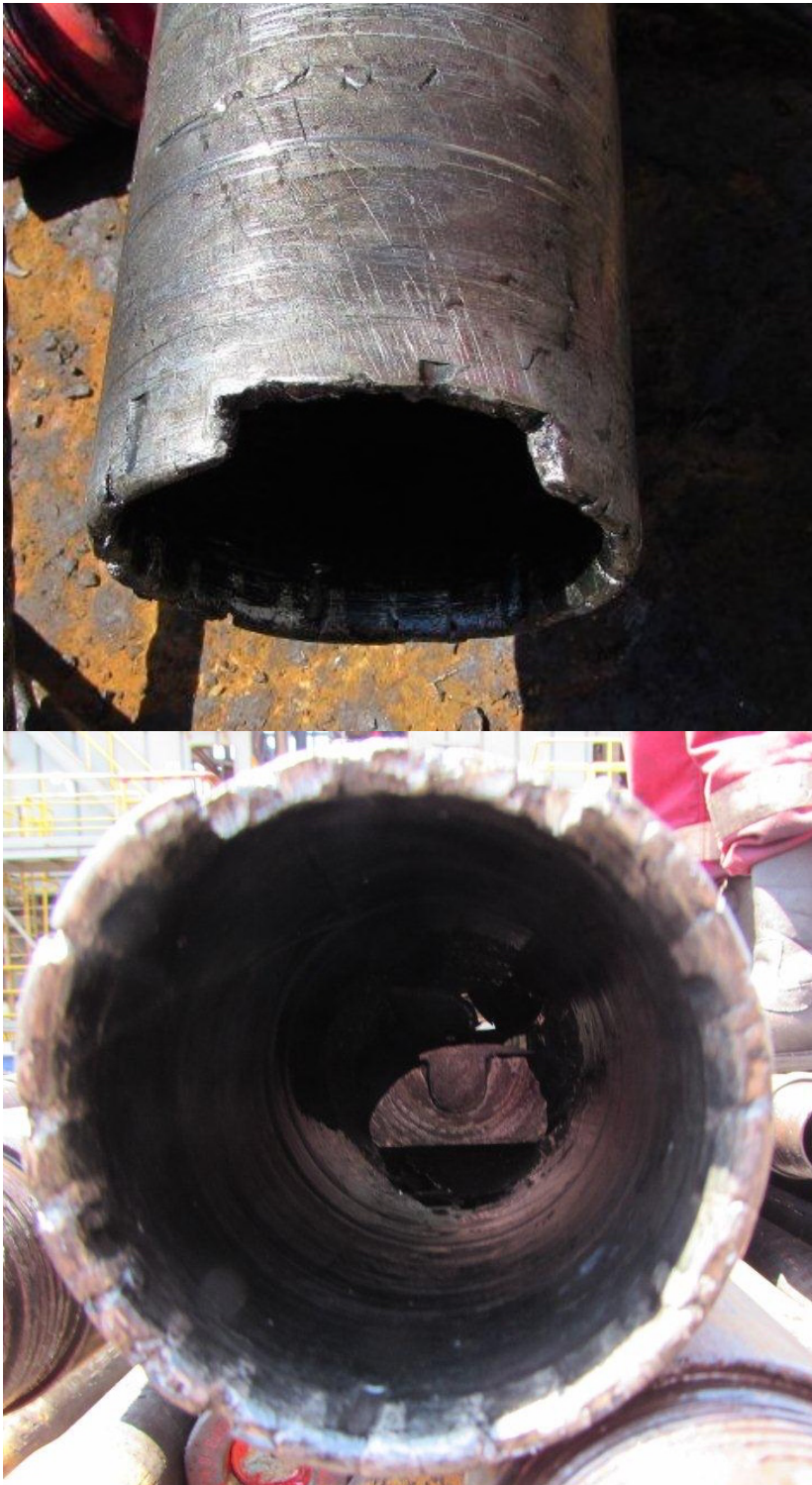
Case History: 3.500" x 2.992" SXDS Burn Shoe BOP Slip



Here are some pictures of 1 of the wash over shoes in action. We have some BOP slips that fell out of the BOP and down the side of the coiled tubing, eventually becoming wedged in place while the coiled tubing was POOH. We cut 3200m of coiled tubing before eventually finding the slips and changing over the SXDS shoe to mill the extremely hard slips. As you can see, once a sufficient amount slip was milled off, the slip eventually became jammed up inside of the shoe along with some coiled tubing.



Case History: 3.500" x 2.992" SXDS Burn Shoe BOP Slip



Exact run times were not provided but we think it was about 4-5 hours.