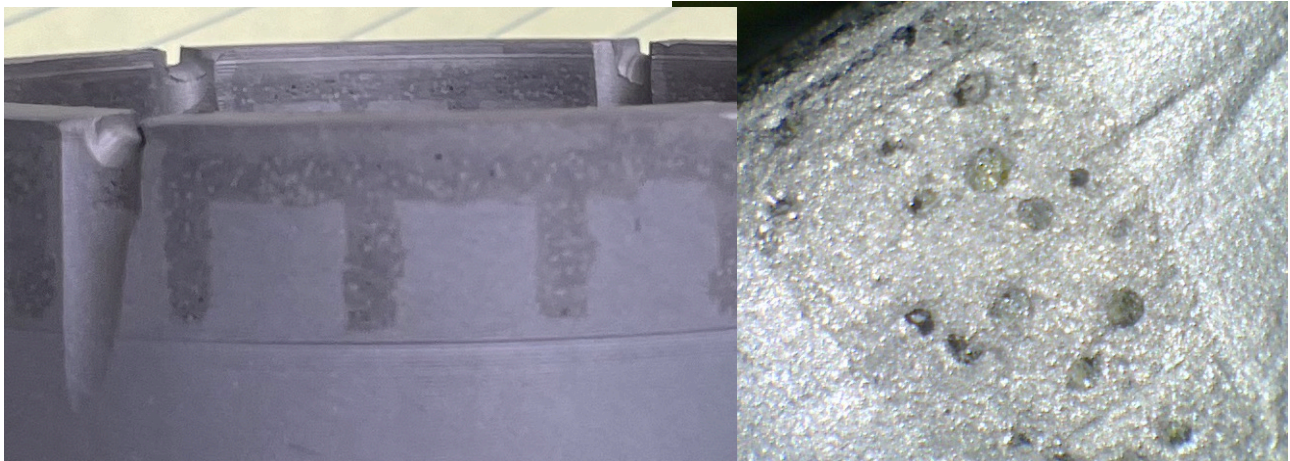


SXDS Thin-Wall Diamond Burn Shoes



Conventional XDS matrix head shoes require a central steel structure for internal strength and is molded in a way similar to matrix drill bits. This limits the thickness of the matrix head to about 3/8" per side for sizes 6 3/4" and smaller and up to 1" per side for larger sizes.

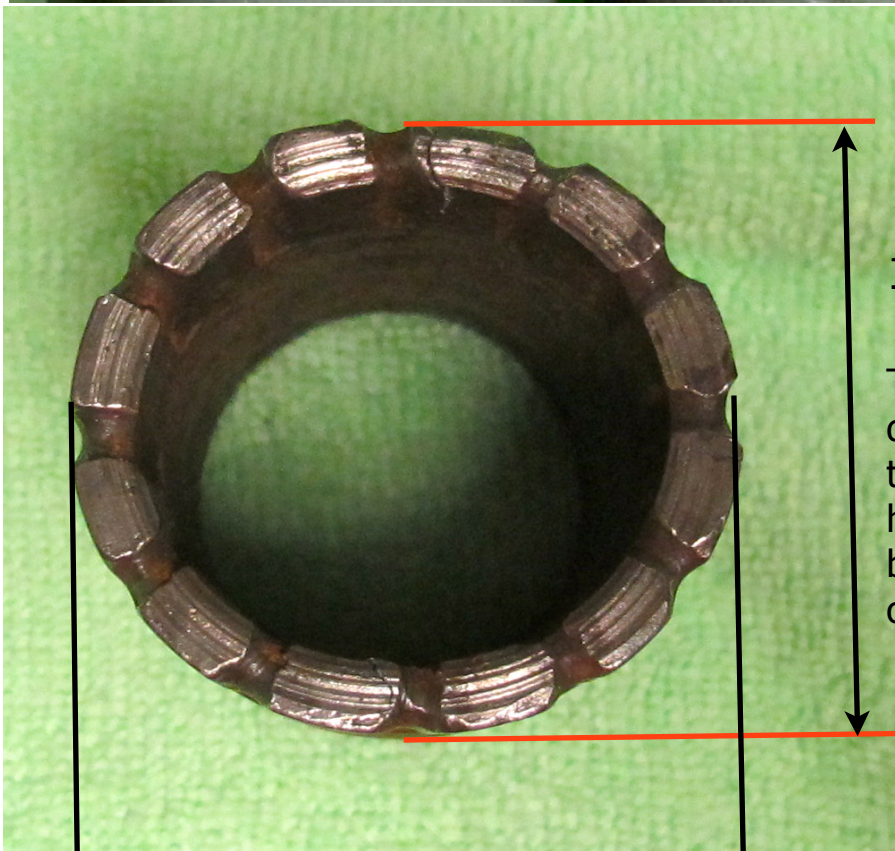
For applications that need a smaller kurf less than 3/8" we have developed a thin-wall shoe head built in a different manner. Instead of just a central steel "blank" the SXDS shoe body starts with the steel body as the molding container into which pockets of diamond-impreg is cast at high furnace temperatures in a controlled atmosphere. Once cast the excess steel mass is machined away from where the impreg is positioned. The result is a steel skeleton wrapped around the diamond-impreg pods that cannot be easily distinguished from the steel.



In this manner of construction you gain a tremendous amount of strength and eliminate the massive matrix head that can crack when pinched or belled. What is given up is the SXDS has only about half the diamond grit as the XDS type shoe.

Short Bit & Tool Co.
225 Gold St.
Garland, Texas 75042
972-205-1011

SXDS Thin-Wall Diamond Burn Shoes



1.880"

This used SXDS was destruct tested by trying to crush the head. It egg shaped by .060" and had only one small crack.

1.940"

Short Bit & Tool Co.
225 Gold St.
Garland, Texas 75042
972-205-1011